

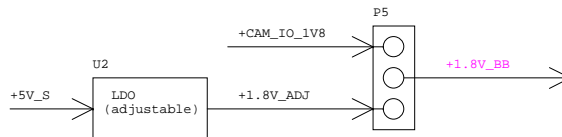
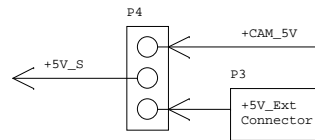
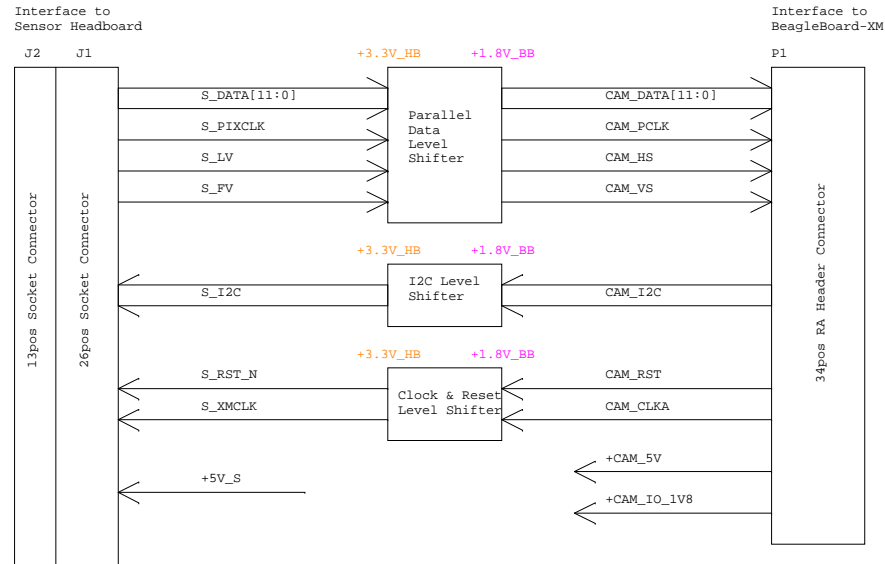
# BeagleBoard\_XM Adapter

Page	Description
1	Title Page
2	Block Diagram
3	Parallel Data & I2C
4	Power, Clock & Reset

Rev	Who	Date	Description
Rev 0.0	Joe KK	11/22/2010	Initial
Rev 0.1	Joe KK	11/30/2010	Add P6 and R11 for CAM_RST control selection

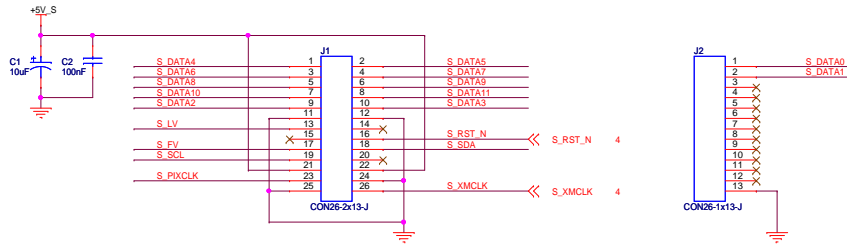


# Block Diagram

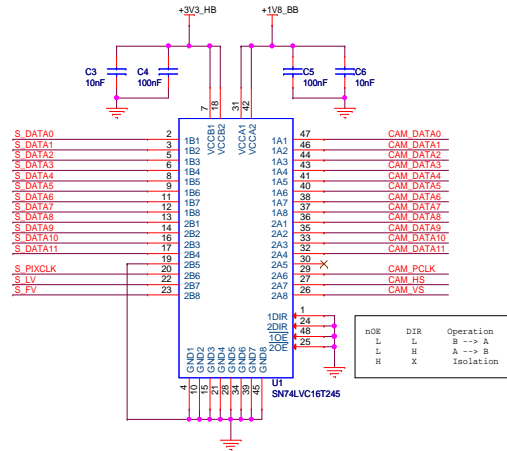


# Parallel Data & I2C

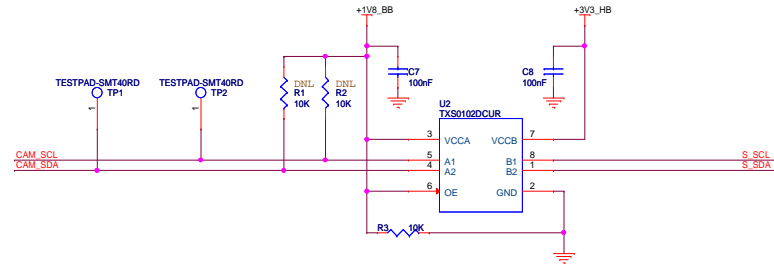
## Sensor Headboard I/F



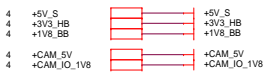
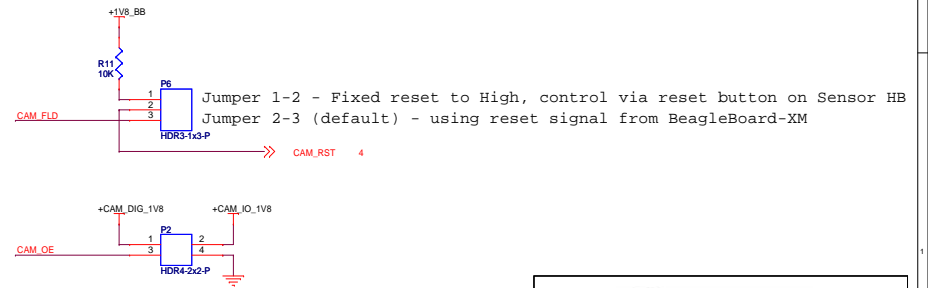
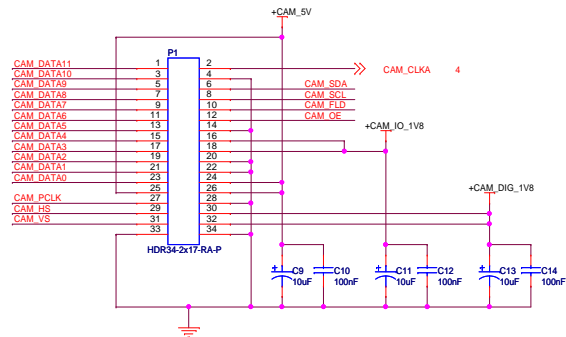
## Parallel Data Level Shifter



## I2C Level Shifter

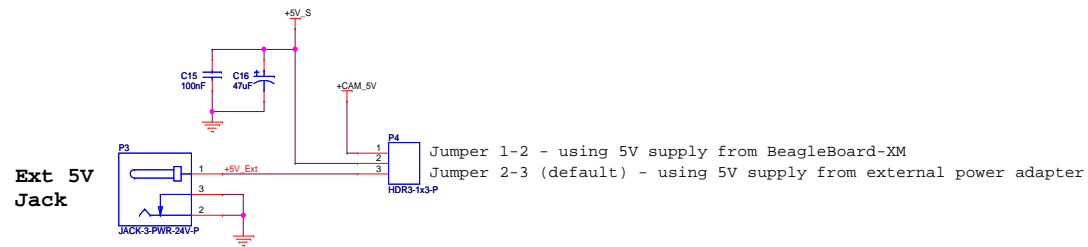


## BeagleBoard-XM Camera I/F

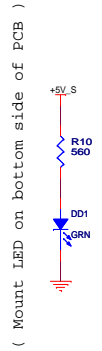
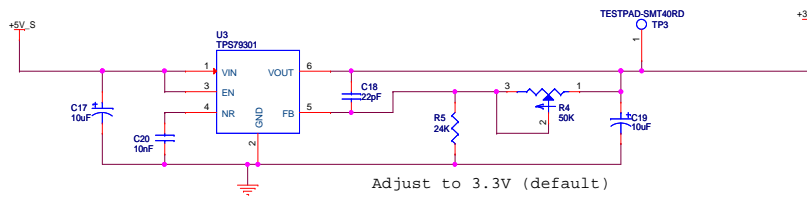


File: Parallel Data & I2C		
Size: C	Document Name: BeagleBoard_XM Adapter_AP21023	Rev: 0.1
Date: Tuesday, November 30, 2010	Sheet: 3	of 4

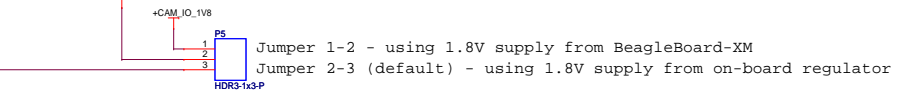
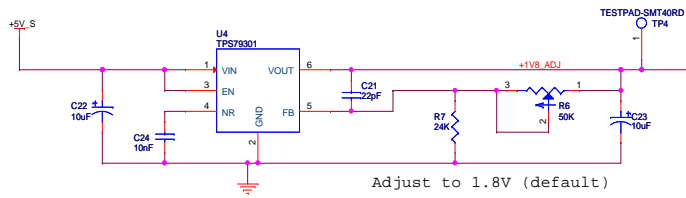
# Power, Clock & Reset



## Adjustable Power Supply for Headboard 3.3V Level-shifting



## Adjustable Power Supply for BeagleBoard-XM 1.8V Level-shifting



## Clock & Reset Level Shifter

