



a.out header

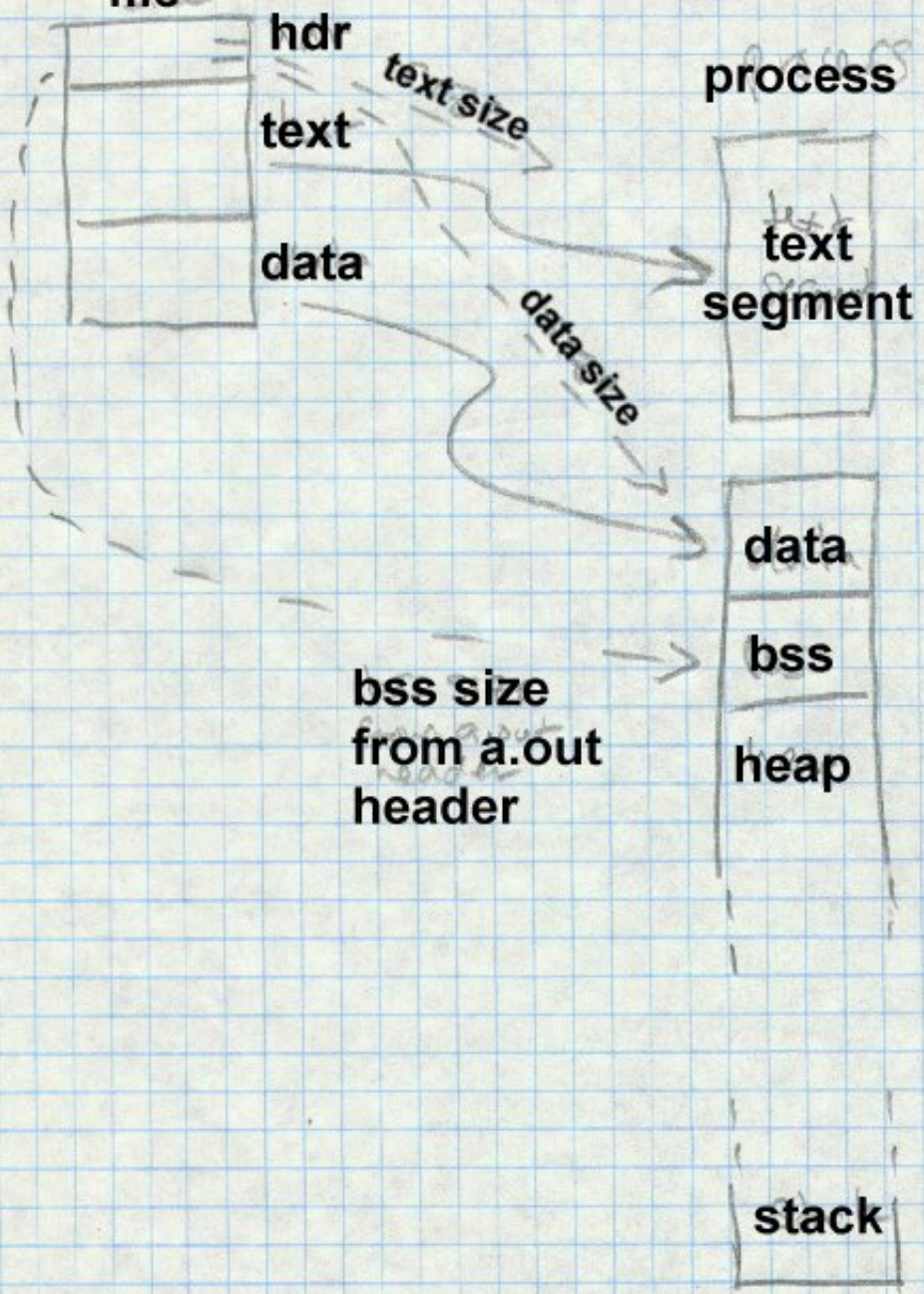
text section

data section

other sections

3-3

a.out
file



pagable
a.out file

header page, *not*
(not mapped)

process
process

t text
pages

d data
pages

read only
mapped pages

copy on
copy on write
mapped pages

address 0
text
segment
(read-only)

data

bss

heap

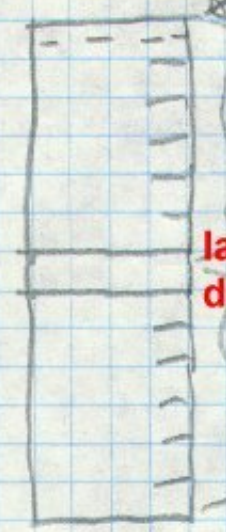
read
write

stack

read
write



pagable
a.out file



header in first
text page

last text/first data
double mapped

read only
mapped pages

copy on write
mapped pages

process



page 0 not valid
address 0x1000

text
segment
(read-only)

data

bss

heap

stack

read
write

read
write

3-5

Note: this figure is supposed to be almost the same as 3-4, so I've put the different stuff in red.

a.out header

text

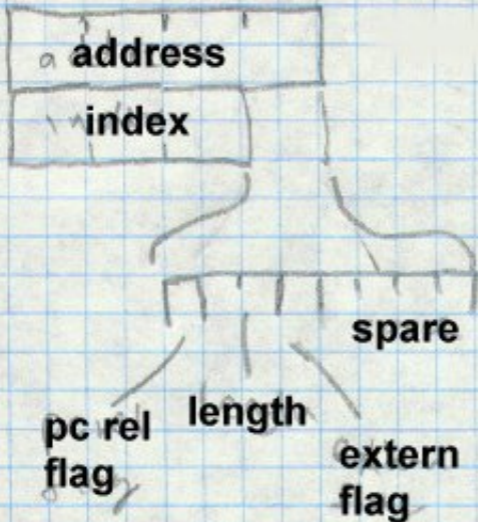
data

text
reloc

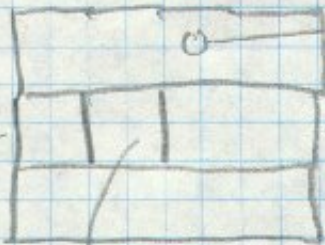
data
reloc

symbol
table

string
table



name offset



debug info

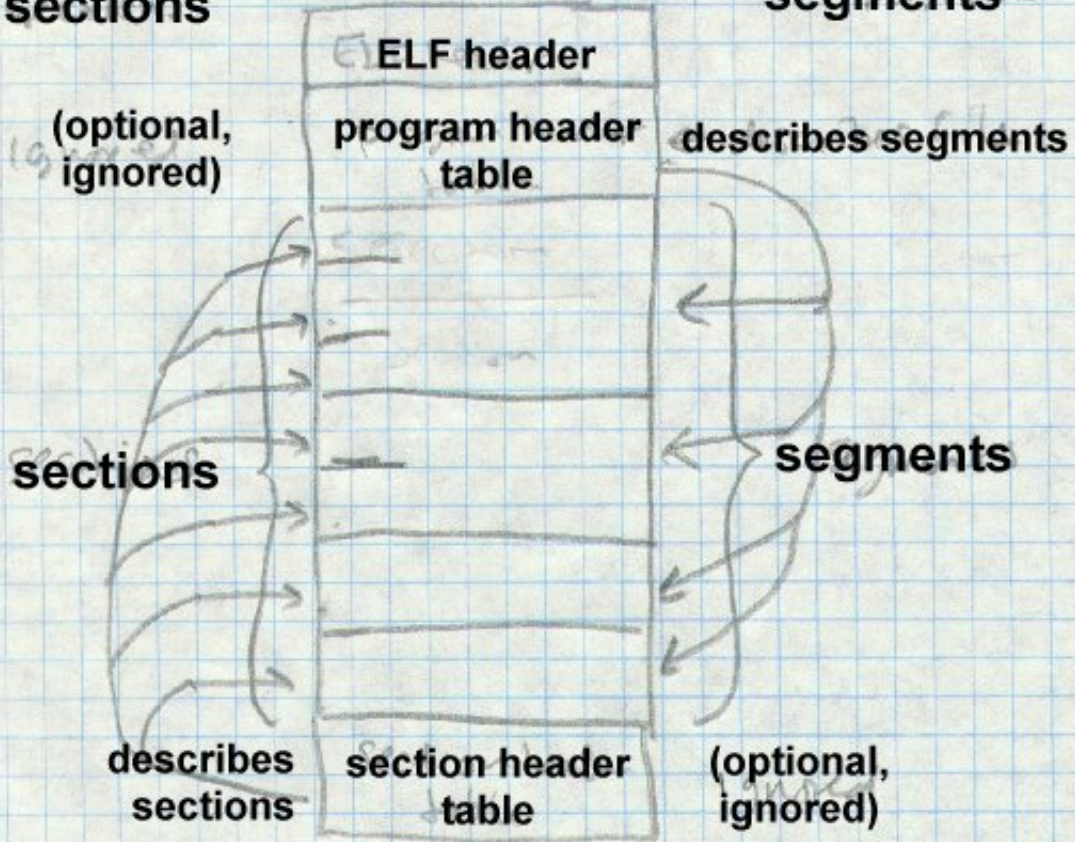
value

spare

type

**linkable
sections**

**executable
segments**



ELF header
(segment table)

(not considered sections)

.text

.data

.rodata

.bss

.sym

.rel.text

.rel.data

.rel.rodata

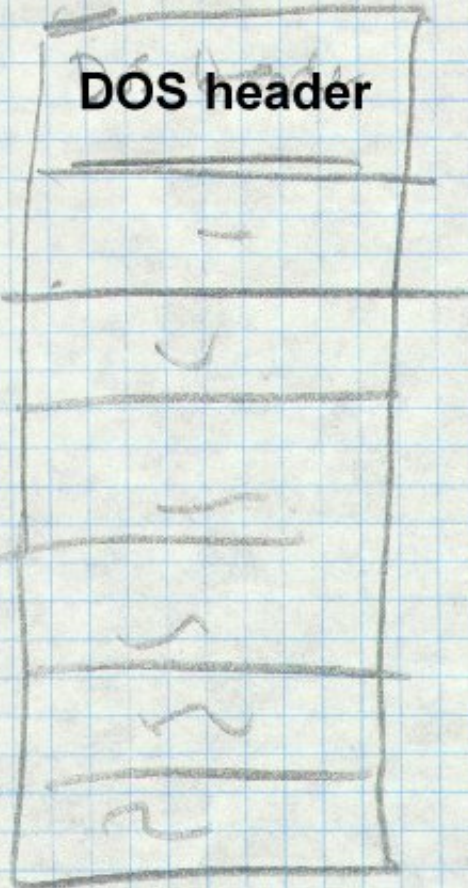
.line

.debug

.strtab

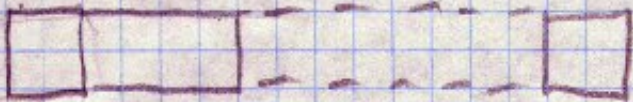
section table (not considered a section)

DOS header



See chapter
file for
box captions

See callouts in chapter
for the captions for all
these boxes.



**record
type**

length

data

checksum